

# APARTMENT 1.03

## 1 Bedroom

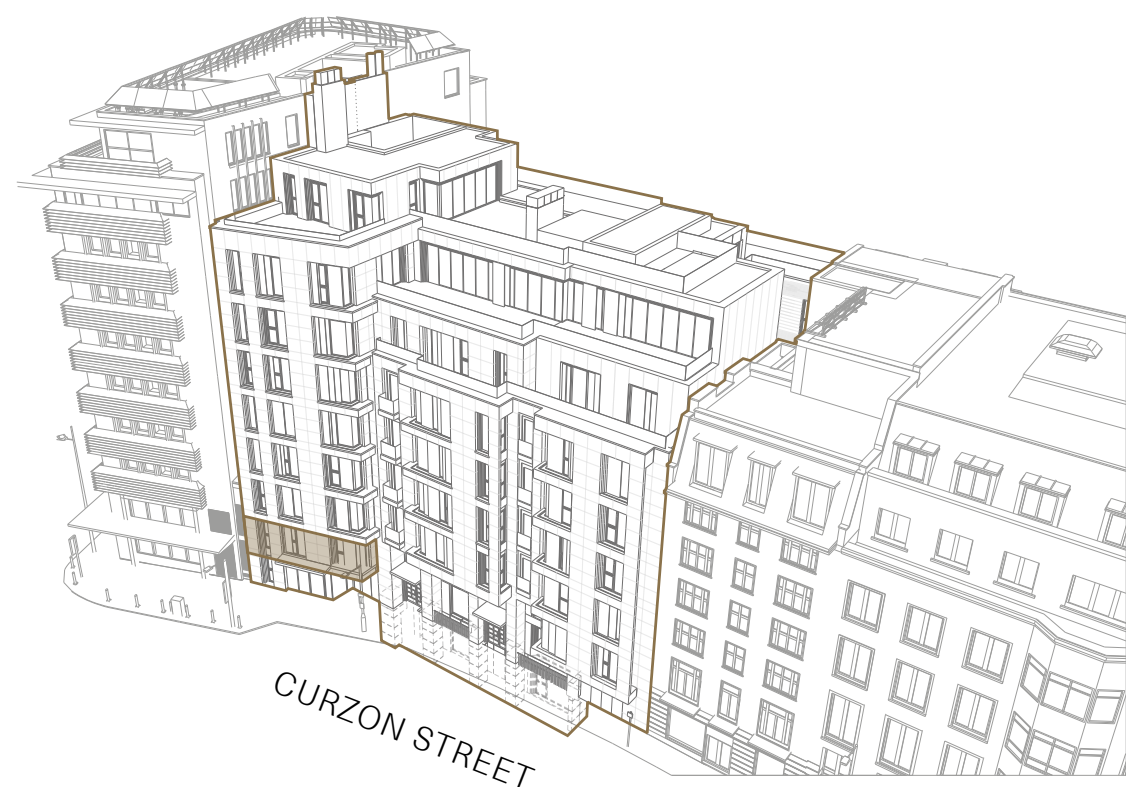
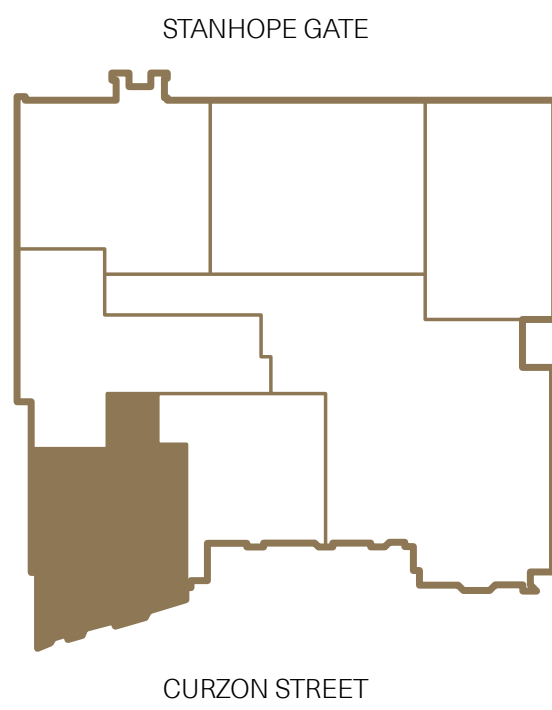
### Apartment Features

| Total area       | 96.42 sq m    | 1,038 sq ft   |
|------------------|---------------|---------------|
| Lounge           | 4.25m x 5.08m | 13'9" x 16'7" |
| Kitchen / Dining | 5.40m x 4.96m | 17'7" x 16'3" |
| Study            | 3.07m x 3.57m | 10'1" x 11'7" |
| Master Bedroom   | 7.54m x 3.15m | 24'7" x 10'3" |



North

### Level 01



### Level 01



### Key:

- Depicts measurement points
- M&E** Mechanical & Electric Cupboard
- PR** Powder Room
- Fireplace

Apartment layouts provide approximate measurements only. Dimensions, which are taken from the indicated points of measurement, are for guidance only and are not intended to be used for carpet sizes, appliance space or items of furniture. Apartment areas are provided as gross internal areas under the RICS measuring practice.