



FOUR SEASONS

PRIVATE RESIDENCES
FORT LAUDERDALE

A PROJECT BY FORT PARTNERS

PRIVATE RESIDENCE

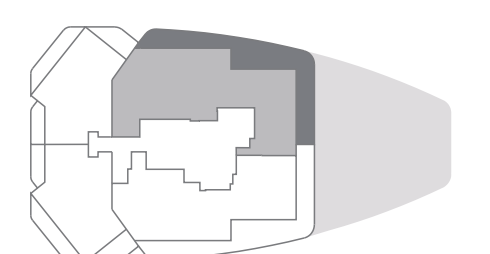
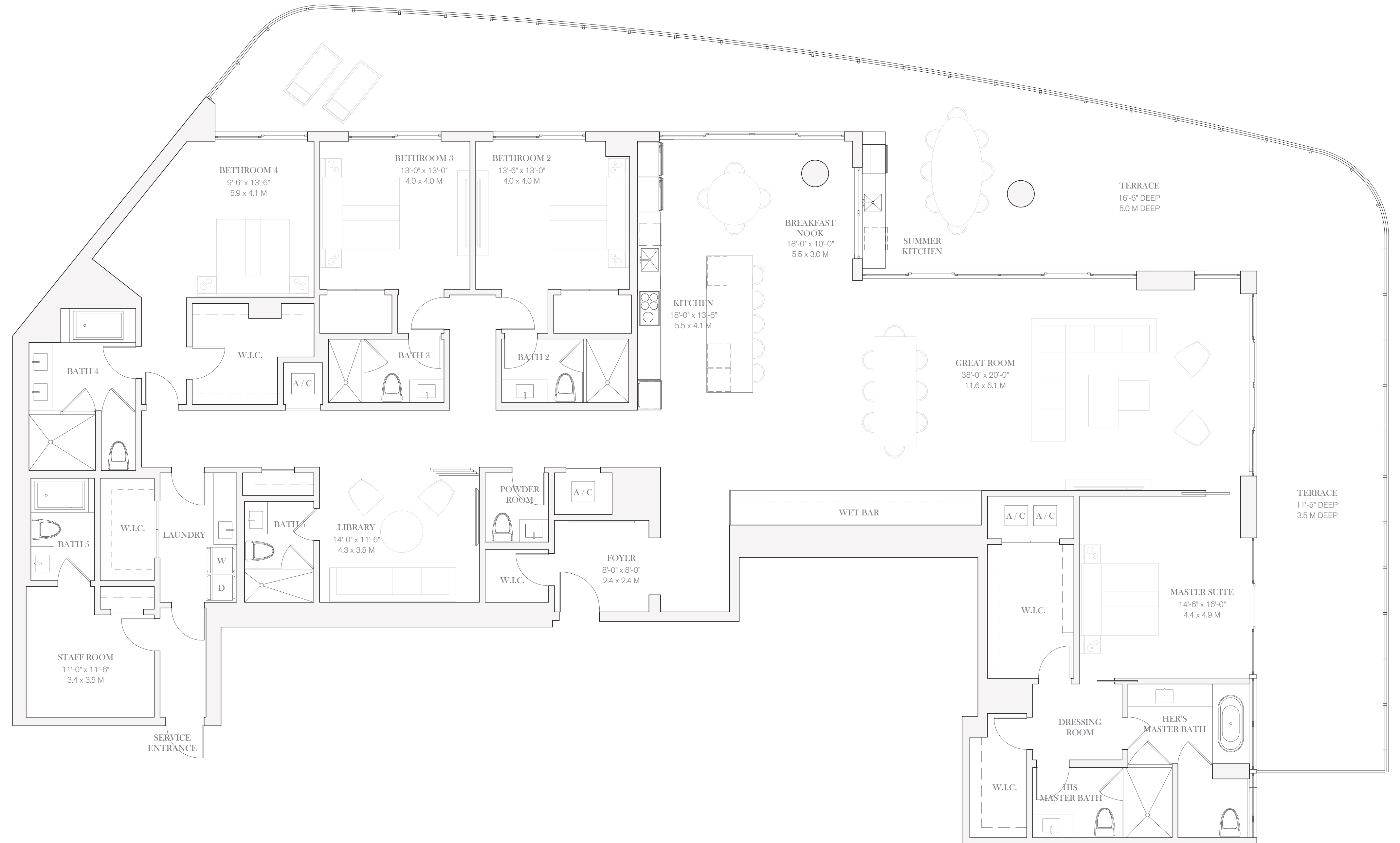
2002

FOUR BEDROOMS
LIBRARY
SEVEN BATHROOMS
POWDER ROOM
STAFF ROOM

INTERIOR
4,415 SQ FT / 410.17 SQ M
EXTERIOR
1,661 SQ FT / 154.31 SQ M

PRIVATE RESIDENCES

- DECORATOR READY
- PRIVATE EXPANSIVE TERRACES WITH GLASS RAILINGS AND OCEAN AND CITY VIEWS
- FLOOR TO CEILING WINDOWS AND SLIDING DOORS THROUGHOUT RESIDENCE
- LOFTY CEILING HEIGHTS
- SKY HOMES WITH DOUBLE-HEIGHT LIVING ROOMS AND BALCONIES
- KITCHEN APPLIANCES INCLUDING MIELE® AND WOLF® (COOK TOP, OVEN, MICROWAVE AND DISHWASHER) AND SUB-ZERO® (REFRIGERATOR, FREEZER AND WINE COOLER)
- EUROPEAN CUSTOM CABINETRY IN KITCHENS, BATHROOMS AND LAUNDRY ROOMS
- BATHROOMS INCLUDE CUSTOM EUROPEAN VANITIES AND BRANDED SELECT FIXTURES AND HARDWARE
- LAUNDRY ROOMS
- LARGE WALK-IN CLOSETS
- PRIME COAT FINISHED WALLS
- PREWIRED FOR HIGH-SPEED INTERNET AND CABLE
- 24-HOUR RESIDENTIAL CONCIERGE SERVICES
- COMPLETE ACCESS TO FOUR SEASONS SERVICES



OCEAN VIEW

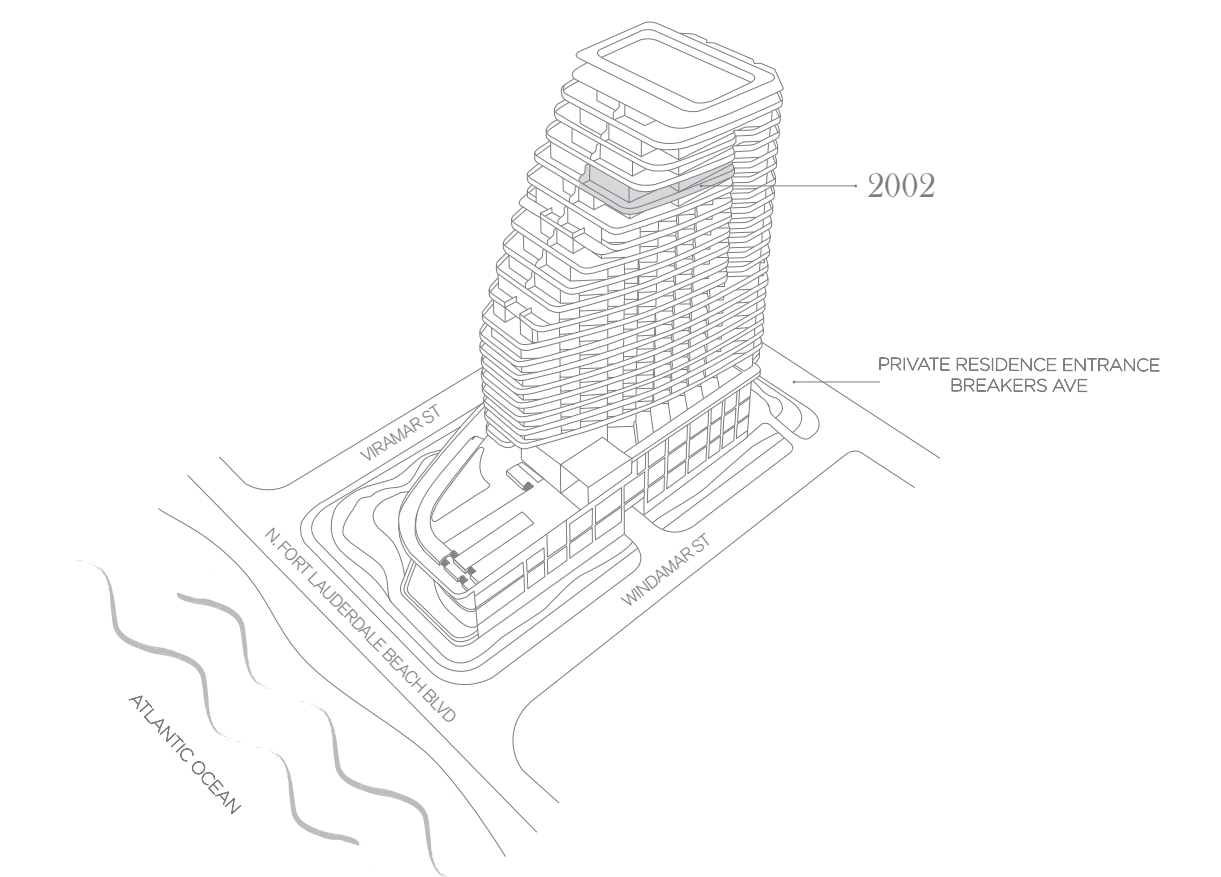


**PRIVATE
RESIDENCE**

2002

FOUR BEDROOMS
LIBRARY
SEVEN BATHROOMS
POWDER ROOM
STAFF ROOM

INTERIOR
4,415 SQ FT / 410.17 SQ M
EXTERIOR
1,661 SQ FT / 154.31 SQ M



954.363.0000
FORT525RESIDENCES.COM



EQUAL HOUSING OPPORTUNITY: THESE MATERIALS ARE NOT INTENDED TO BE AN OFFER TO SELL, OR SOLICITATION TO BUY A UNIT IN THE CONDOMINIUM. SUCH AN OFFERING SHALL ONLY BE MADE PURSUANT TO THE PROSPECTUS (OFFERING CIRCULAR FOR THE CONDOMINIUM) AND NO STATEMENTS SHOULD BE RELIED UPON UNLESS MADE IN THE PROSPECTUS OR IN THE APPLICABLE PURCHASE AGREEMENT. IN NO EVENT SHALL ANY SOLICITATION, OFFER OR SALE OF A UNIT IN THE CONDOMINIUM BE MADE IN, OR TO RESIDENTS OF, ANY STATE OR COUNTRY IN WHICH SUCH ACTIVITY WOULD BE UNLAWFUL FOR REASON OF PUBLIC POLICY. ONLY THE COMPLETE OFFERING TERMS ARE AVAILABLE BY APPLICATION AVAILABLE FROM THE OFFERING FILE NO. CPT15076. STATED DIMENSIONS ARE MEASURED TO THE EXTERIOR FACE OF EXTERIOR WALLS AND TO THE EXTERIOR FACE OF WALLS ADJOINING CORRIDORS OR OTHER COMMON ELEMENTS. THE METHOD OF MEASUREMENT Varies FROM AND IS LARGER THAN THE DIMENSIONS THAT WOULD BE DETERMINED BY USING THE EXTERIOR WALLS AND THE DIMENSIONS OF THE UNIT SET FORTH IN THE DECLARATION (WHICH GENERALLY ONLY INCLUDES THE INTERIOR APERTURE BETWEEN THE PERIMETER WALLS AND EXCLUDES STRUCTURAL COMPONENTS). NOTE THAT MEASUREMENTS OF ROOMS SET FORTH ON THESE PLANS ARE GENERALLY TAKEN AT THE GREATEST POINTS OF EACH ROOM TO MAXIMIZE THE ROOM'S AREA. PERFECT RECTANGLES WITH 90 DEGREE ANGLES AND SQUARES ARE ASSUMED IN THE MEASUREMENTS. THE ACTUAL ROOM AREA, HOWEVER, WILL BE SMALLER THAN THE PRELIMINARY DIMENSIONS. ALL DIMENSIONS STATED LENGTH TIMES WIDTH. ALL DIMENSIONS ARE APPROXIMATE AND MAY VARY WITH ACTUAL CONSTRUCTION. ALL FLOOR PLANS AND DEVELOPMENT PLANS ARE SUBJECT TO CHANGE. THE DEVELOPER EXPRESSLY RESERVES THE RIGHT TO MAKE MODIFICATIONS, REVISIONS AND CHANGES TO THESE DIMENSIONS AND ROOMS. ALL DIMENSIONS OF FURNISHINGS, APPLIANCES, BATHS, COULTERS, SINKS, FLOOR COVERINGS, LIGHTING AND OTHER MATTERS OF DETAIL, INCLUDING, WITHOUT LIMITATION, ITEMS OF FINISH AND DECORATION, ARE CONCEPTUAL ONLY AND ARE NOT NECESSARILY INCLUDED IN EACH UNIT. CONSULT YOUR PROSPECTUS AND PURCHASE AGREEMENT TO DETERMINE WHAT IS INCLUDED WITH YOUR UNIT PURCHASES. IF ANYTHING, THE PROJECT IS BEING DEVELOPED BY FORT PARTNERS, A DELAWARE LIMITED PARTNERSHIP, WHICH HAS A LIMITED RIGHT TO USE THE TRADEMARKS AND LOGOS OF FORT PARTNERS PURSUANT TO A LICENSE AND MARKETING AGREEMENT WITH FORT PARTNERS.

FOUR SEASONS PRIVATE RESIDENCES FORT LAUDERDALE ARE NOT OWNED, DEVELOPED OR SOLD BY FORT SEASONS HOTELS LIMITED OR ITS AFFILIATED FOUR SEASONS. THE DEVELOPER, FORT PARTNERS, LP, USES THE FOUR SEASONS TRADEMARKS AND TRADENAMES UNDER LICENSE FROM FORT SEASONS HOTEL LIMITED, THE MARKS "FOUR SEASONS," "FOUR SEASONS HOTEL AND RESORTS," ANY COMBINATION THEREOF AND THE TREE DESIGN ARE REGISTERED TRADEMARKS OF FORT SEASONS HOTELS LIMITED IN CANADA AND USA AND FOUR SEASONS HOTELS BARBADOS LTD. ELSEWHERE.

EXCLUSIVE MARKETING & SALES: DOUGLAS ELLMAN DEVELOPMENT MARKETING